

ELITE  
*importers*



**DUNE**

FACTORY CATALOGUE



# DUNE

AUSTRALIA CATALOGUE  
FACTORY

ELITE IMPORTERS PTY LTD | ABN 72 611 769 674

02 9725 3079 | [orders@eliteimporters.com](mailto:orders@eliteimporters.com) | [www.eliteimporters.com](http://www.eliteimporters.com) | Unit 1A, 3-5 Wrightland Place, Arndell Park NSW 2148

ELITE  
*importers*

**DUNE**  
WE ARE DECORATION

    
*follow us*



Factory Graphite 600x1200 | Factory Fumo 600x600

# FACTORY

The Factory series consists of a cement finish design conceived for the creation of contemporary spaces. This range is proudly designed and manufactured in Spain by Dune Ceramica.

## Technical Information

SIZE	MATERIAL	THICKNESS	EDGE	INDICATION FOR USE	PRINT FACES	SLIP RESISTANCE	SURFACE FLATNESS	WATER ABSORPTION
200X200	PORCELAIN	9	CUSHION	FLOOR/WALL	16+	CLASS 1	< 0.3	< 0.5
95X600	PORCELAIN	10	RECTIFIED	FLOOR/WALL	16+	CLASS 1	< 0.5	< 0.5
300X600	PORCELAIN	10	RECTIFIED	FLOOR/WALL	16	CLASS 1	< 0.5	< 0.5
600X600	PORCELAIN	10	RECTIFIED	FLOOR/WALL	8	CLASS 1	< 0.5	< 0.5
600X1200	PORCELAIN	11	RECTIFIED	FLOOR/WALL	4	CLASS 1	< 0.5	< 0.5

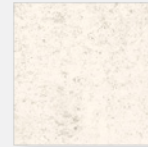
M  
P2

V2

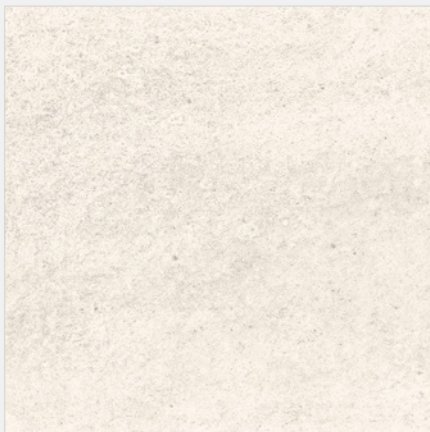
# FACTORY



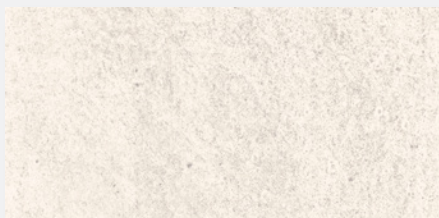
FACTORY FUMO 600X1200  
187653 - FACTORY FUMO REC MATT



FACTORY FUMO 200X200  
187667 - FACTORY FUMO MATT



FACTORY FUMO 600X600  
187644 - FACTORY FUMO REC MATT



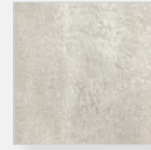
FACTORY FUMO 300X600  
187633 - FACTORY FUMO REC MATT



FACTORY FUMO 95X600  
187924 - RODAPIE FACTORY FUMO REC MATT



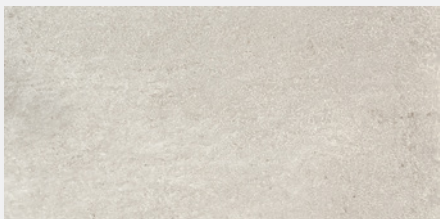
FACTORY FERRO 600X1200  
187654 - FACTORY FERRO REC MATT



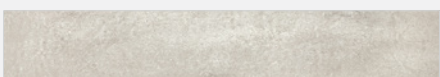
FACTORY FERRO 200X200  
187668 - FACTORY FERRO MATT



FACTORY FERRO 600X600  
187645 - FACTORY FERRO REC MATT



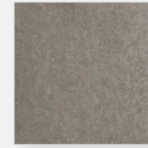
FACTORY FERRO 300X600  
187636 - FACTORY FERRO REC MATT



FACTORY FERRO 95X600  
187925 - RODAPIE FACTORY FERRO REC MATT



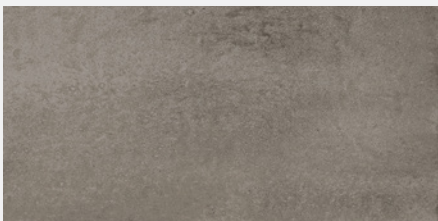
FACTORY GRAFITE 600X1200  
187655 - FACTORY GRAFITE REC MATT



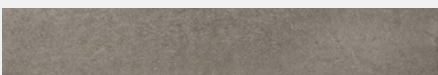
FACTORY GRAFITE 200X200  
187669 - FACTORY GRAFITE MATT



FACTORY GRAFITE 600X600  
187646 - FACTORY GRAFITE REC MATT



FACTORY GRAFITE 300X600  
187637 - FACTORY GRAFITE REC MATT


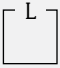



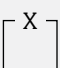


FACTORY GRAFITE 95X600  
187926 - RODAPIE FACTORY GRAFITE REC MATT

# ICONS

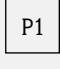
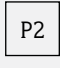
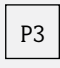
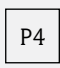
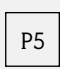
## Finish

This describes the type of tile surface finish applicable to the slip rating icon

	<b>GLOSS</b> Shiny surface
	<b>LAPPATO</b> Partial shiny surface
	<b>MATT</b> Smooth, non-reflective
	<b>NATURAL</b> Textured surface
	<b>ALFRESCO</b> Slightly textured
	<b>EXTERNAL</b> Slip-resistant

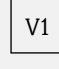
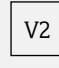
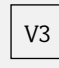
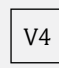
## Slip Rating

The below explanations are based on the level of risk potentially involved

	<b>VERY HIGH</b> Internal
	<b>HIGH</b> Internal & covered external
	<b>MODERATE</b> Internal & covered external
	<b>LOW</b> External suitable
	<b>VERY LOW</b> External suitable

## Colour and Pattern Variation

This gives an indicator of the level of print variation to expect with a tile range

	<b>UNIFORM APPEARANCE</b> Minimal variation
	<b>SLIGHT VARIATION</b> Pattern with similarities
	<b>MODERATE VARIATION</b> Significant variation
	<b>HIGH VARIATION</b> Random & extreme variation

Colours and patterns of visual examples could vary from final product as screen and print settings could effect display.





ELITE IMPORTERS PTY LTD | ABN 72 611 769 674  
02 9725 3079 | orders@eliteimporters.com | www.eliteimporters.com | Unit 1A, 3-5 Wrightland Place, Arndell Park NSW 2148

ELITE  
*importers*

**DUNE**  
WE ARE DECORATION

    
*follow us*